

A Look Back...

Capital projects portfolio
at a glance

2021/22



**Hamilton
City Council**
Te kaunihera o Kirikiriroa



In brief

Everything we do is about improving the wellbeing of Hamiltonians and making our city one of the best places to live, work and raise families.

Our capital projects portfolio helps Council look after the assets we already have and allows us to support growth throughout the city. From improving the safety of busy intersections and upgrading the Hamilton Zoo entrance, to building strategic infrastructure in new residential areas, our staff delivered \$252 million worth of capital projects in 2021/22.

Our 2021-31 Long-Term Plan will see the Council invest nearly \$2.5 billion on capital projects - an increase of \$444 million on the previous Long-Term Plan - and was the culmination of extensive community engagement. Our bold plan includes spending \$55 million over 10 years to provide safe routes for walking, biking, scooting and skating around the city, and \$116.8 million on upgrades to the Pukete Wastewater Treatment Plant.

Our package of work is shaped by five priorities that are based on feedback from our community:

1. A city that's easy to live in
2. A city where our people thrive
3. A central city where people love to be
4. A fun city with lots to do
5. A green city

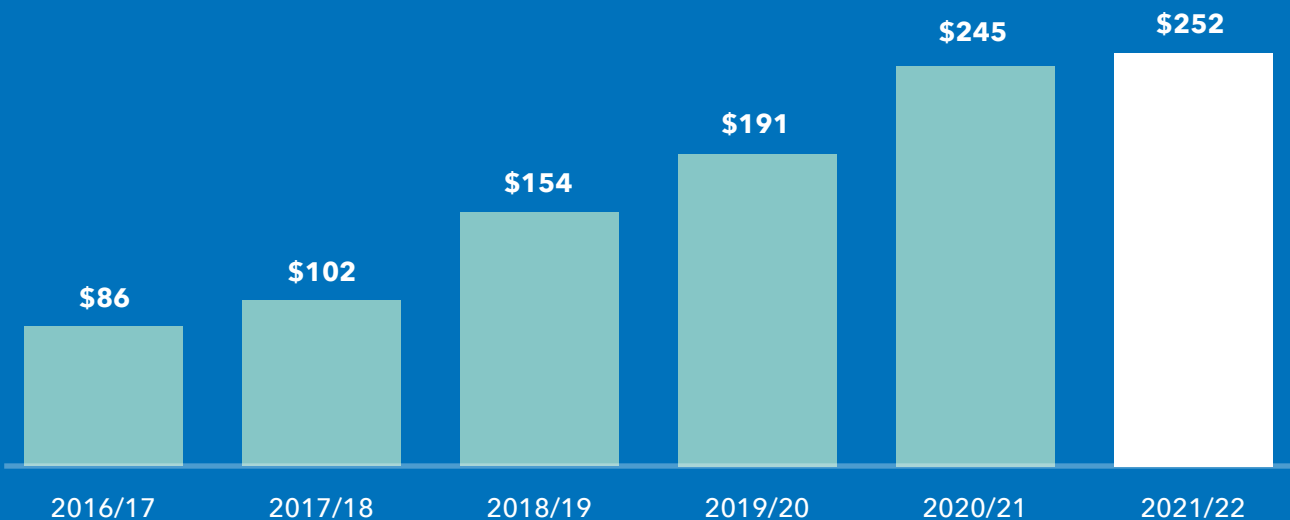
The past 12 months wasn't without its challenges as the city dealt with the impact of the Covid-19 pandemic, rising inflation and supply chain constraints. These challenges, together with central government's demands, prompted new ways of thinking and changes to our capital projects portfolio.

Despite these demands, Council staff delivered great outcomes for Hamilton.



We delivered
\$252 million
worth of capital projects
in 2021/22.

CAPITAL SPEND (NZD \$M)



Shaping a city that's easy to live in

Ahuahungia teetehi taaone e tau ai te noho ki roto

We want a city that's easy to live in, explore, and connect. We want people of all ages and abilities to easily access different neighbourhoods and for our children to be able to cycle safely to school. We're also focused on providing public facilities accessible to everyone.

- Funding for the Borman Road and Horsham Downs Road urban upgrade was approved by Waka Kotahi NZ Transport Agency. Council went to market for construction tenders.
- The Central Library's passenger lift and goods lift were replaced.
- Work started on new open spaces and a library for Rototuna Village.



Work continued on the city's new bridge over the Waikato River

with piling completed and the bridge's V-shaped pier lifted into place. The project's focus has now shifted to installing the girders.

- Eastern Pathways/ Te Ara o te Rawhiti's business case was approved by Waka Kotahi NZ Transport Agency. This project is centred around the University of Waikato and schools on the eastern side of the city. Once complete, it will provide a safer environment for cycling and walking and improve the priority of public transport to the educational facilities.
- About \$4 million worth of walking and cycling improvements were completed.

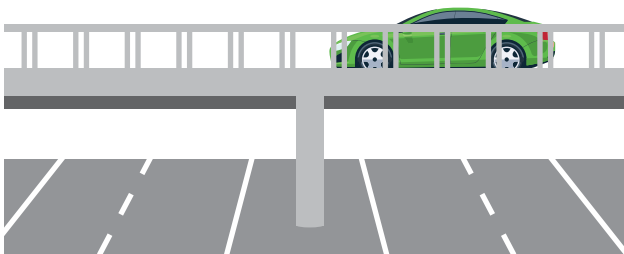


Shaping a city where our people thrive

Ahuahungia teetehi taaone e puaawai ai ngaa taangata katoa

We want to create opportunities for people to thrive in their jobs and lives so they can take advantage of the amazing opportunities and lifestyle Hamilton has to offer.

The Cobham Drive bridge over Wairere Drive was opened to traffic, completing the transformational Hamilton Ring Road project.



The upgrade of Ruakura Road (between Wairere Drive and Silverdale Road), together with the Ruakura Road West connection to the new Hamilton section of the Waikato Expressway, were completed.

This work created a safer environment for pedestrians, cyclists and other road users.



Shaping a central city where people love to be

Ahuahungia te pokapuu o teetehi taaone e arohaina ai e te taangata

We want to create a vibrant central city that's safe and easy to move around and that has something to do for our diverse communities to come together and enjoy.

- The concept design for the Tristram Street/Collingwood Street intersection upgrade was approved. The inner-city roundabout is being upgraded ahead of the completion of the new Accident Compensation Corporation (ACC) building on the intersection's south-west corner.
- A new bus stop and signalised crossing were created near the intersection of Anglesea Street and Liverpool Street, with support from the Blind Foundation.



- A zebra crossing and cycle lanes were installed on Ward Street, between Tristram Street and Anglesea Street.
- Demolition work started on the disused Municipal Pools. The site is being converted into a green space as part of the enhancement of the Ferrybank precinct.

A suite of cycle safety improvements was rolled out in the central city. This included:

- Cyclist footrests were installed at the Collingwood Street/Victoria Street intersection and the Anzac Parade/Grey Street intersection.
- A dedicated cycle lane and right turn cycle light were created at the intersection of Victoria Street and Claudelands Road.
- Cycle safety treatments were made along Mill Street at the intersections with Victoria Street, Ulster Street, Willoughby Street, Tristram Street, Norton Street and Lake Road.

We made accessibility improvements to Bryce Street including a new bus stop, cycle lanes and a raised zebra crossing near the Hamilton Transport Centre.





**The new central city jetty and
revetment wall (a protective
covering to safeguard against
erosion) was completed.**

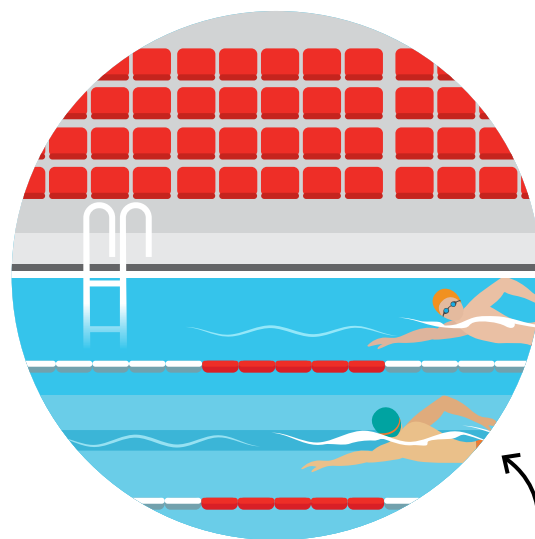


Shaping a fun city with lots to do

Ahuahungia teetehi taaone ngahau e tini ai ngaa kaupapa papai hei whai

We want Hamilton Kirikiriroa to be a great place for everyone to play and have fun. We're continuing to invest in places that make our city special, such as Hamilton Gardens, Waiwhakareke Natural Heritage Park, Hamilton Zoo, FMG Stadium Waikato and Waterworld.

FMG Stadium Waikato's WEL Network Stand was reopened after seismic strengthening.



We replaced Waterworld's roof, bleachers and handrails
The hydrotherapy pool was also relined.

The Mahoe Park playground was completed.





A new tuatara house was opened at Hamilton Zoo.

Hamilton Gardens' latest themed attraction, the Egyptian Garden, was opened along with the adjacent Palm Court and public toilets.

We've opened the new Hamilton Zoo entrance. Stage two of the project is underway to complete the entry to Waiwhakareke Natural Heritage Park and upgrade Brymer Road and the parking areas.



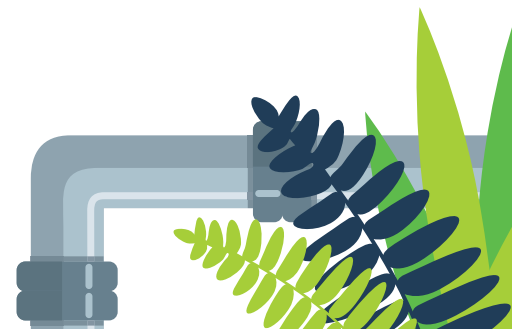
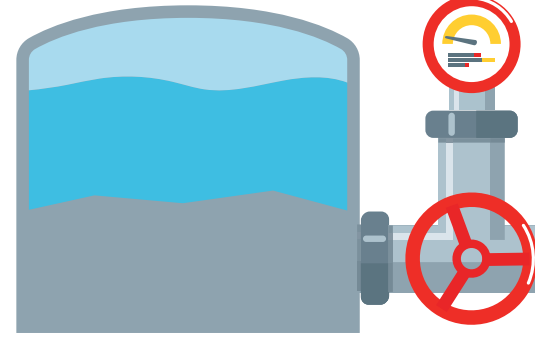
Shaping a green city

Ahuahungia teetehi taaone tiaki taiao

We want to invest in our natural areas, manage a safe and resilient water supply, have a clear response to climate change, and manage our stormwater and wastewater. We love our environment and we're committed to protecting it for future generations.

- The first lizard restoration site was completed at Peacocke, providing a home to re-located copper skinks.
- We completed erosion control projects in the city's Mangaiti Gully and Waitawhiriwhiri catchments and continued work in Kirikiriroa.
- Maeroa Reservoir's roof, pump and valves were replaced.
- Part of the upgrade to the Snell Drive wastewater pump station was finished, with the rising main (pipe) completed.

- Construction started on the Peacocke main wastewater pump station.
- Work began on the eastern reservoir water mains (large water pipe). The pipe will be housed inside the new Peacocke river bridge and, once complete, gives Council another option to feed water to the east side of the city from the Waiora Water Treatment Plant.
- The Northern Transfer Main for the Peacocke area (a wastewater pipe stretching from Cobham Drive to Crosby Road) was completed in May, nine months ahead of schedule.
- The Western Wastewater Interceptor (large wastewater pipe) was completed. The 2.4km pipe gives the city's network more resilience and capacity in the western side of the city.
- New pipe work and pump station upgrade started for the demand management zone around our Newcastle Water Reservoir. The intent is to build more resilience in the network by controlling the feed of water into the zone.





We began a feasibility assessment of the city's wastewater storage facilities.

Ensuring the wastewater network has more capacity to enable the city to cope with growth.

An upgrade of the Pukete Wastewater Treatment Plant was completed.

This helps reduce the risk of overflows and makes sure we have sufficient capacity for our city's growth. We also awarded a contract to upgrade the filter screens at the plant.



Our award winners

CB Civil's outstanding work on the Peacocke northern wastewater pipelines was recognised at the Waikato CCNZ Hynds Construction Awards 2022, with wins in the major project category, health and safety, and the supreme award.

HEB Construction were joint winners in the projects under \$1 million category for the Ulster Street erosion control project.


The Western Wastewater Interceptor project, completed by Connell Contractors, was a finalist in the up to \$20 million category.

Council's stormwater master plan webviewer won a Local Government Funding Agency award. The online tool shows all the city's gullies and identifies where erosion needs to be remedied.

Hamilton City Council
Garden Place, Private Bag 3010, Hamilton

 HamiltonCityCouncil

 @hamiltoncitycouncil

 07 838 6699

[hamilton.govt.nz](https://www.hamilton.govt.nz)